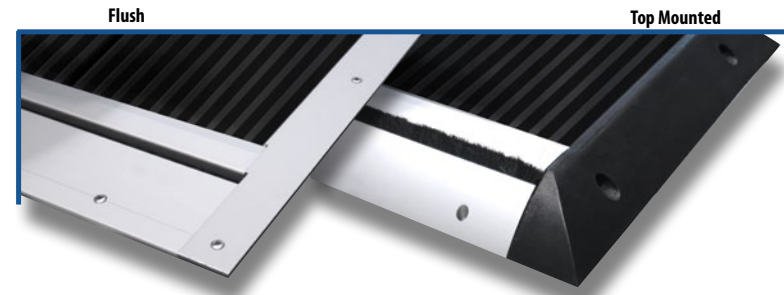


NorSap™ Deck Rails for the NorSap 1000/800

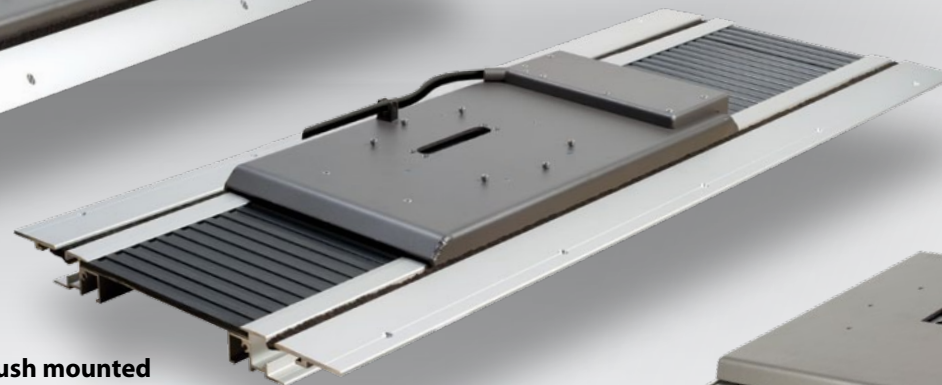
The NorSap series of deck rails. You may choose between electrical operated and manual positioned deck rails.

The standard length of deck rails are 1100, 1500, 2000, 2500 and 3000mm. Other lengths may be produced on request.

The main difference is the visual appearance of the deck rails. We produce deck rails for placing on top of existing deck and flush deck rail, for seamless implementation.



6250-1500 Top mounted



6251-1500 Flush mounted
- When you want the deck rail to almost seamless be integrated in your deck.



6652-1500 for a NorSap 1000 chair Top mounted,
with concealed release wiring.

Stable and solid deck rails with attractive and modern design

- Manufactured of anodized aluminium with rubber coated center plate
- Easy to fit

For the 1000/800 Series

(The '##' is replaced with desired length at order, the standard lengths are 1100, 1500, 2000, 2500 or 3000mm)

- 6250-##00UL** Deck rail, top mounted, with release handle on chair, 36-59Kg
6251-##00UL Deck rail, **flush mounted**, with release handle on chair, 34-58Kg

6252-##00UL Same as 6250, but without the rubber center pane.
Allowing you to implement the existing decks interior in the center pane, i.e. carpet, Max 5mm height.

6253-##00UL Same as 6252 but **flush mounted**, 34-58Kg

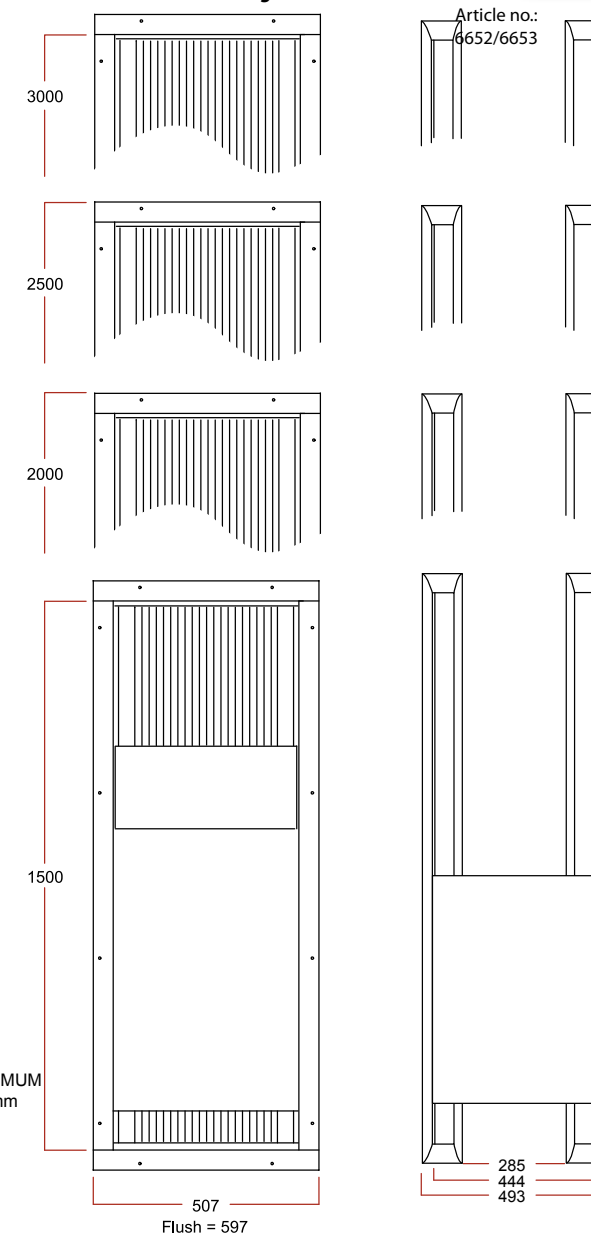
For the NorSap 1000 only

- 6652-##00** Two rails top mounted, manually operated, with concealed deck rail release wire.
6653-##00 Same as 6652 but **flush mounted**, manually operated

For the NorSap 800 only

- 6676-##00** Basic Deck Rail - Two rails top mounted, manually operated, deck rail release wire through pedestal
6677-##00 Basic Deck Rail - Same as 6676 but **flush mounted**, manually operated

Standard Lengths



The different mounting solutions

