

User Manual

08/23/10

Deck Rails for the 1500 / 2000 series (Top and Flush Mounted)

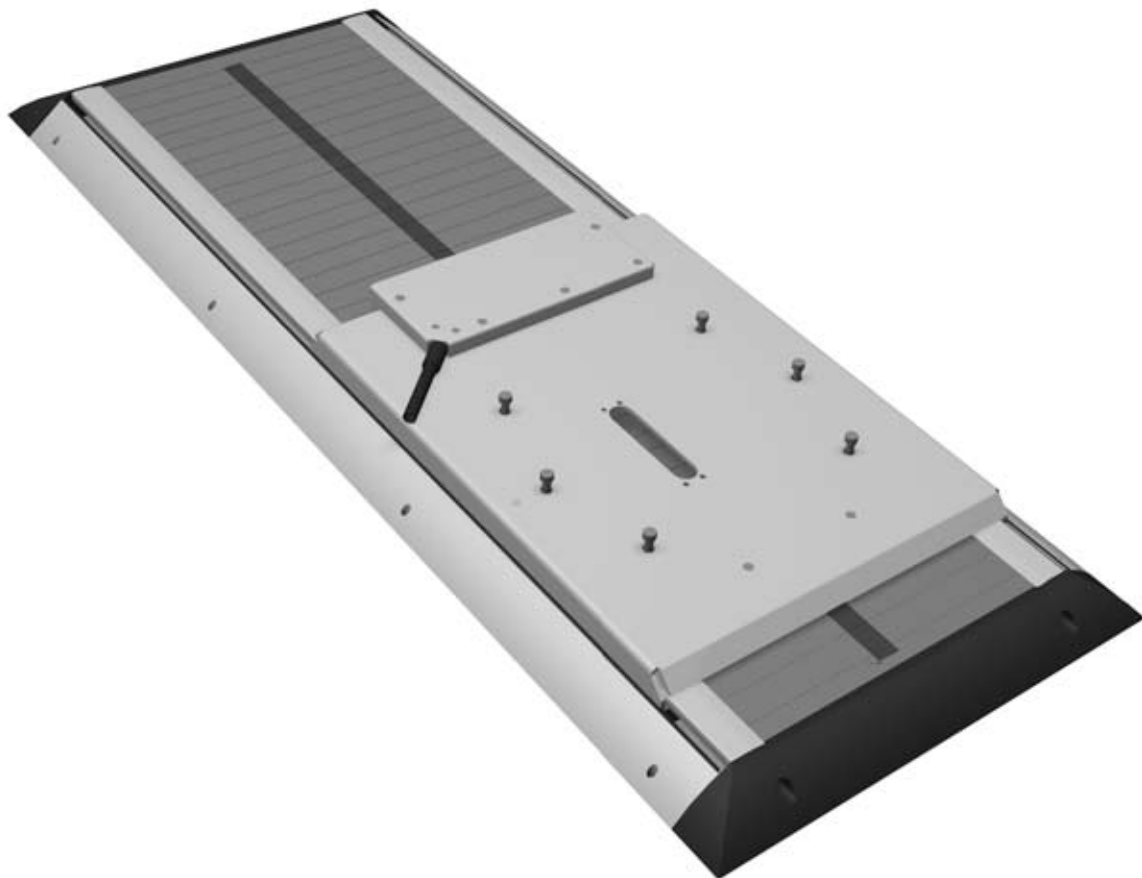
6350-xxxxUL / 6351-xxxxUL - Deck Rails with manual release handle

6352-xxxxUL / 6353-xxxxUL - Deck Rail with manual release handle and split for cables

6354-xxxxUL / 6355-xxxxUL - Deck Rail with manual release handle and split and cable convoyer

6670-xxxx / 6671-xxxx - Electrical driven Deck Rails with split and cable convoyer

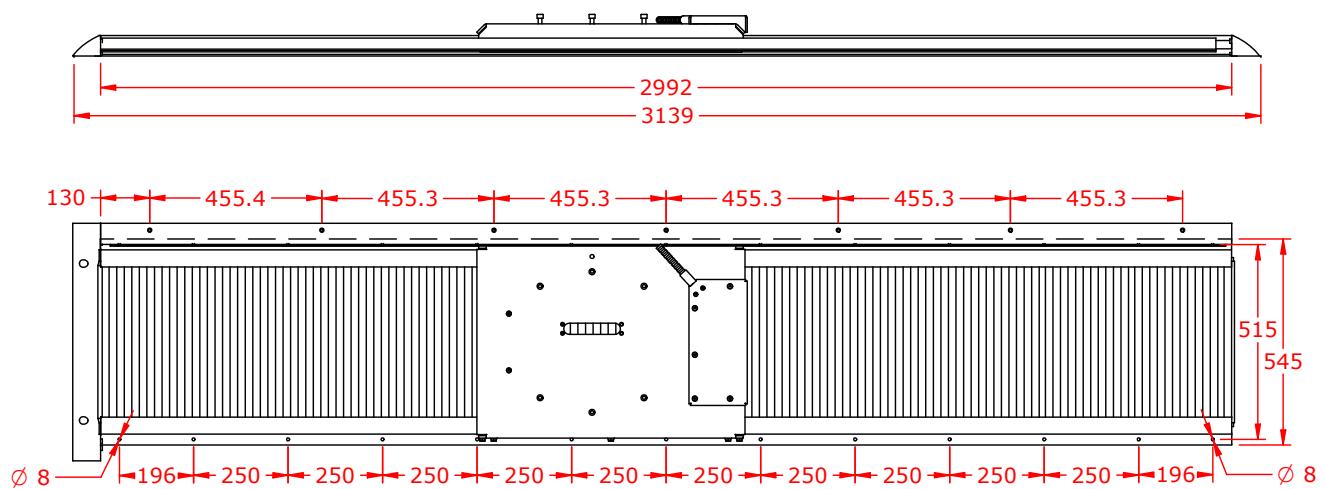
6672-xxxx / 6673-xxxx - Electrical driven Deck Rails w/o cable convoyer



Installation - Top Mounted Deck Rail

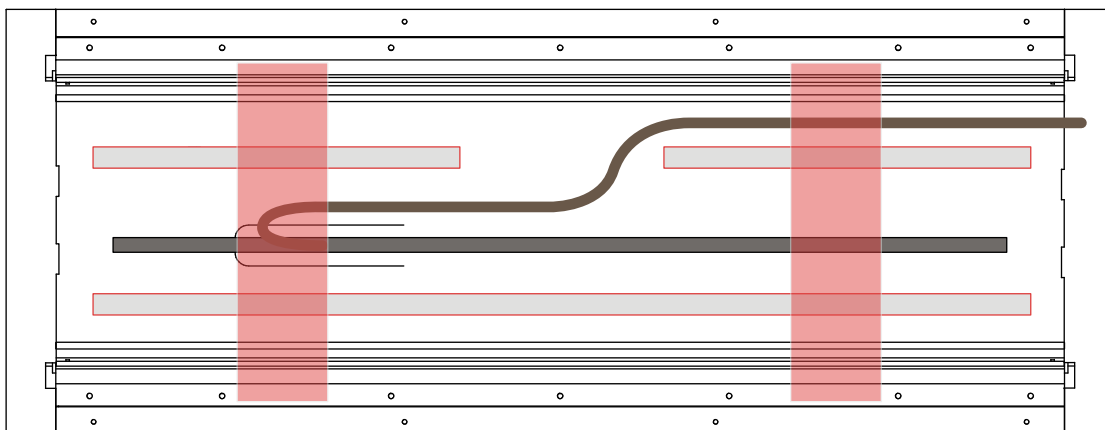
Note - Not all installations will proceed exactly as described here. This is a general guide only.

1. Verify the dimensions of the well and drill holes for the deck rail in the well, being careful to maintain the *exact width* measurement. The position of the last holes on the end of the deck rail will vary depending of the length of the deck rail.
2. Thread the necessary cabling up through the carriage. Confirm that the wheel tracks are completely free of scrap material.

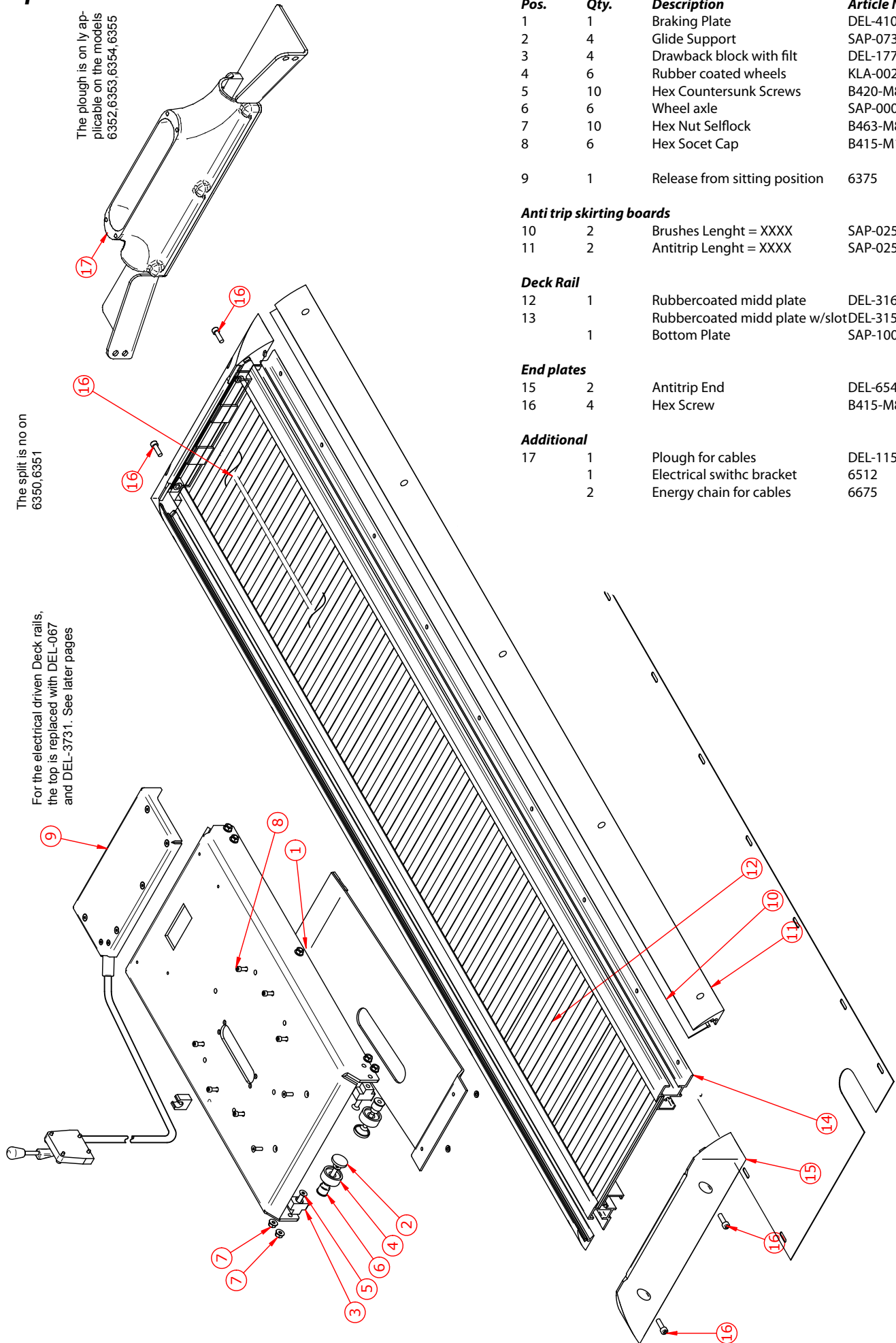


IMPORTANT WHEN MOUNTING

The deck rail 6354, 6355, 6670, 6671 has three (6352, 6353, 6672 and 6673 has two full lengths) supportive profiles underneath the center pane of the splitted deck rail. Its important that these profiles has support, in example if you were to mount the deck rail over a cut out that is deeper than the bottom of the deck rails profiles. If the profiles does not rest on the base floor, additional support is needed to prevent the deck rail to be deformed when tread on.



Top Mounted Deck Rails



Handbrake for deck rail wagon

Pos.	Qty.	Description	Article No.:
1	1	Braking Plate	DEL-410
2	4	Glide Support	SAP-0739
3	4	Drawback block with filt	DEL-177
4	6	Rubber coated wheels	KLA-002
5	10	Hex Countersunk Screws	B420-M8X40
6	6	Wheel axle	SAP-0007
7	10	Hex Nut Selflock	B463-M8
8	6	Hex Socet Cap	B415-M10X30
9	1	Release from sitting position	6375

Anti trip skirting boards

10	2	Brushes Lenght = XXXX	SAP-0259-XXXX
11	2	Antitrip Lenght = XXXX	SAP-0257-XXXX

Deck Rail

12	1	Rubbercoated midd plate	DEL-316-XXXX
13	1	Rubbercoated midd plate w/slot	DEL-315-XXXX
	1	Bottom Plate	SAP-1005-XXXX

End plates

15	2	Antitrip End	DEL-654
16	4	Hex Screw	B415-M8X25

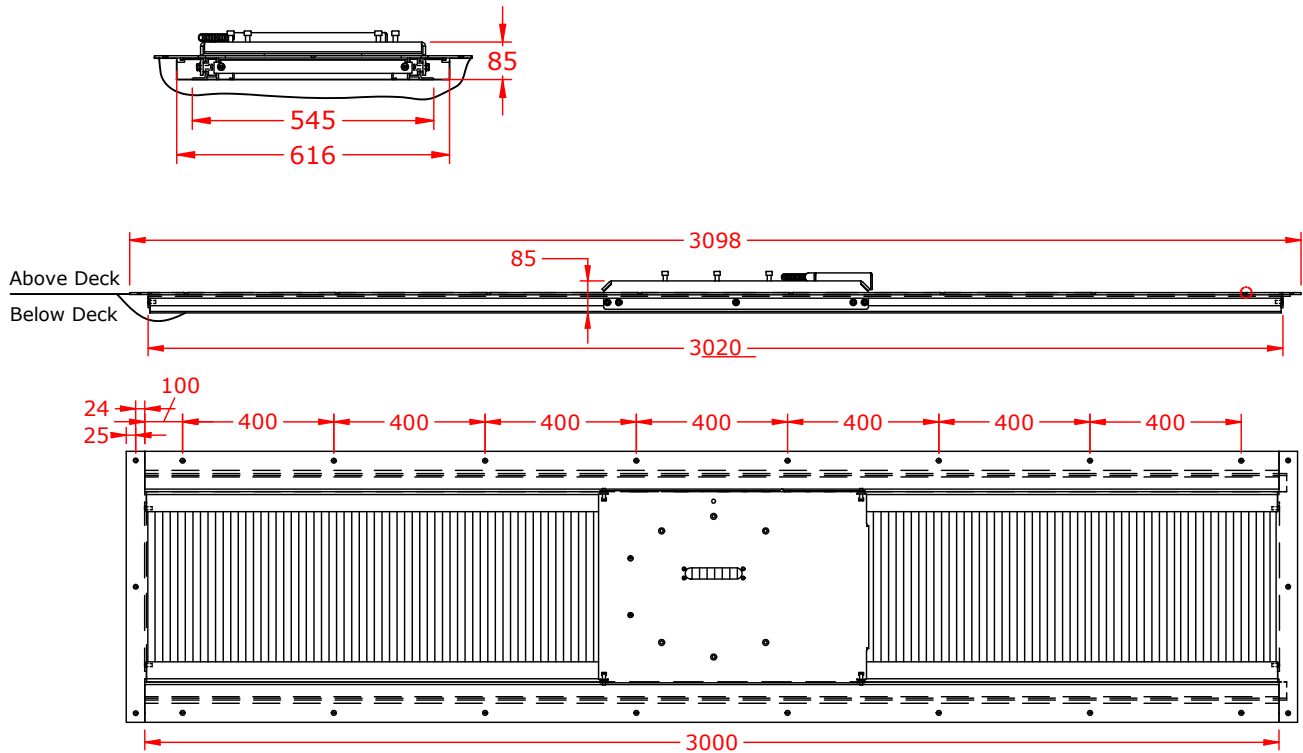
Additional

17	1	Plough for cables	DEL-115
	1	Electrical swithc bracket	6512
	2	Energy chain for cables	6675

Installation - Flush Mounted Deck Rail

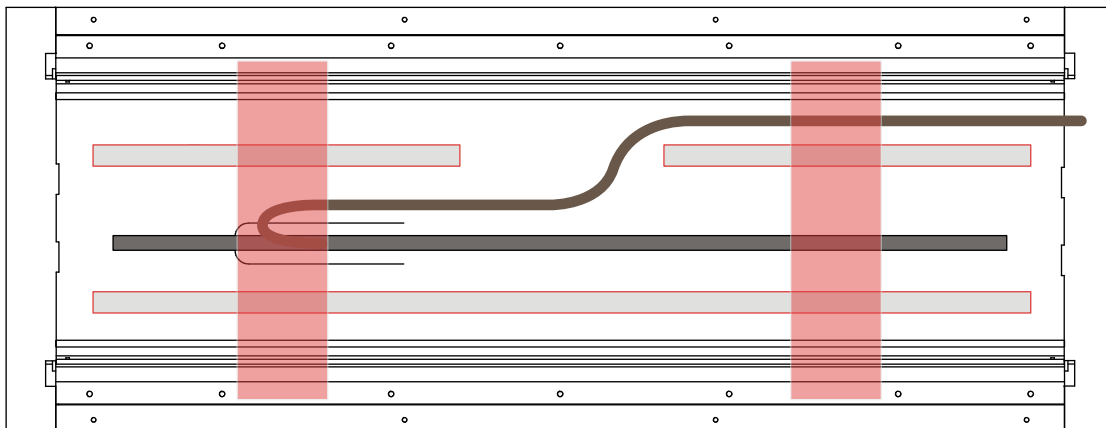
Note - Not all installations will proceed exactly as described here. This is a general guide only.

1. Verify the dimensions of the well and drill holes for the deck rail in the well, being careful to maintain the *exact width* measurement. The position of the last holes on the end of the deck rail will vary depending of the length of the deck rail.
2. Thread the necessary cabling up through the carriage. Confirm that the wheel tracks are completely free of scrap material.



IMPORTANT WHEN MOUNTING

The deck rail 6354, 6355, 6670, 6671 has three (6352, 6353, 6672 and 6673 has two full lengths) support profiles underneath the center pane of the splitted deck rail. Its important that these profiles has support, in example if you were to mount the deck rail over a cut out that is deeper than the bottom of the deck rails profiles. If the profiles does not rest on the base floor, additional support is needed to prevent the deck rail to be deformed when tread on.

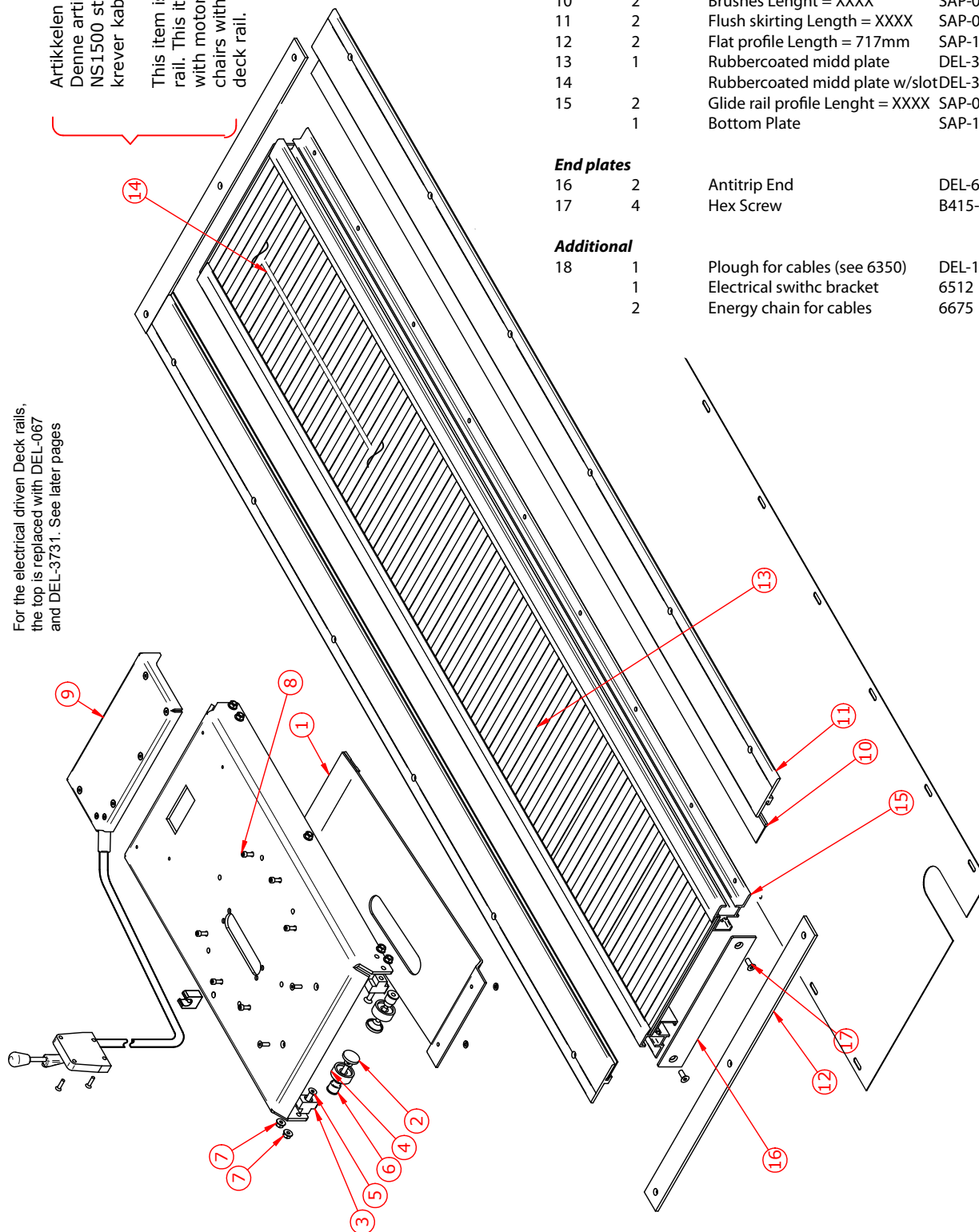


Flush Mounted Deck Rails

Artikkelen inngår ikke i standard dørskinne. Denne artikkelen brukes sammen med NS1500 stol med motor og for stoler som krever kabel gjennomgang i dørrk.

This item is not included on the standard deck rail. This item is used by NS1500 pilot chair with motor/manual driven carriage and for chairs with required cable passage through deck rail.

For the electrical driven Deck rails, the top is replaced with DEL-067 and DEL-3731. See later pages



Handbrake for deck rail wagon

Pos.	Qty.	Description	Article No.:
1	1	Braking Plate	DEL-410
2	4	Glide Support	SAP-0739
3	4	Drawback block with filit	DEL-177
4	6	Rubber coated wheels	KLA-002
5	10	Hex Countersunk Screws	B420-M8X40
6	6	Wheel axle	SAP-0007
7	10	Hex Nut Selflock	B463-M8
8	6	Hex Socet Cap	B415-M10X30
9	1	Release from sitting position	6375

Flush deckrail boards

10	2	Brushes Lenght = XXXX	SAP-0259-XXXX
11	2	Flush skirting Length = XXXX	SAP-0025-XXXX
12	2	Flat profile Length = 717mm	SAP-1002-0717
13	1	Rubbercoated midd plate	DEL-316-XXXX
14	1	Rubbercoated midd plate w/slot	DEL-315-XXXX
15	2	Glide rail profile Lenght = XXXX	SAP-0268-XXXX
	1	Bottom Plate	SAP-1005-XXXX

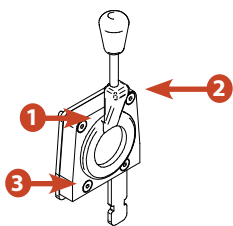
End plates

16	2	Antitrip End	DEL-654
17	4	Hex Screw	B415-M8X25

Additional

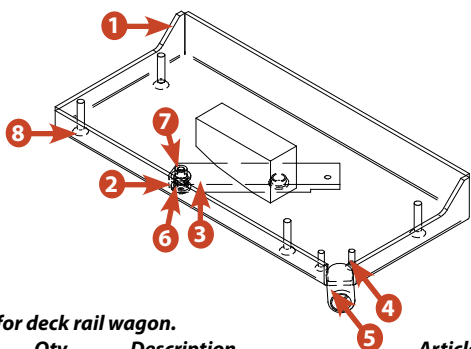
18	1	Plough for cables (see 6350)	DEL-115
	1	Electrical swithc bracket	6512
	2	Energy chain for cables	6675

6375 - Release unit for lockable carriage - Release from sitting position.



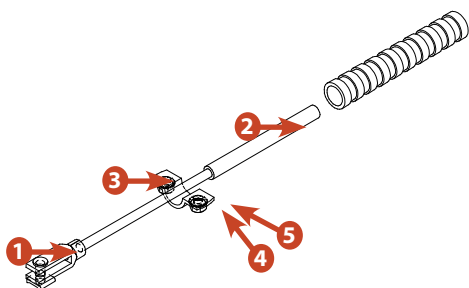
Handbrake for deck rail wagon

Pos.	Qty.	Description	Article No.:
1	1	Leveler for Brake	SPAK-001
2	4	Unbraco Countersunk M5X25	B420-M5X25
3	1	Cable protector	SAP-5089



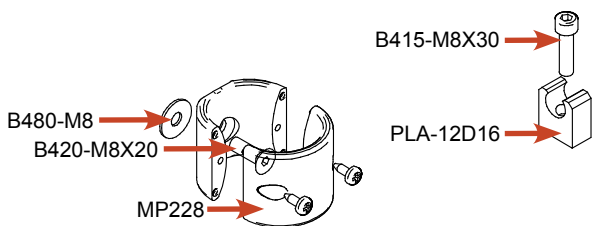
Brake for deck rail wagon.

Pos.	Qty.	Description	Article No.:
1	1	House for breaking system	SAP-0353H
2	1	Unbraco countersunk	B420XM6X20
3	1	Arm	SAP-0287H
4	2	Unbraco countersunk	B420XM5X16
5	1	Sleeve for Cable protector	SAP-0294
6	3	Washer with Sleeve	PLA-0301
7	1	Hingebolt	SAP-0559
8	4	Unbraco countersunk	B420-M6X30
9	1	Locking brick	SAP-0546



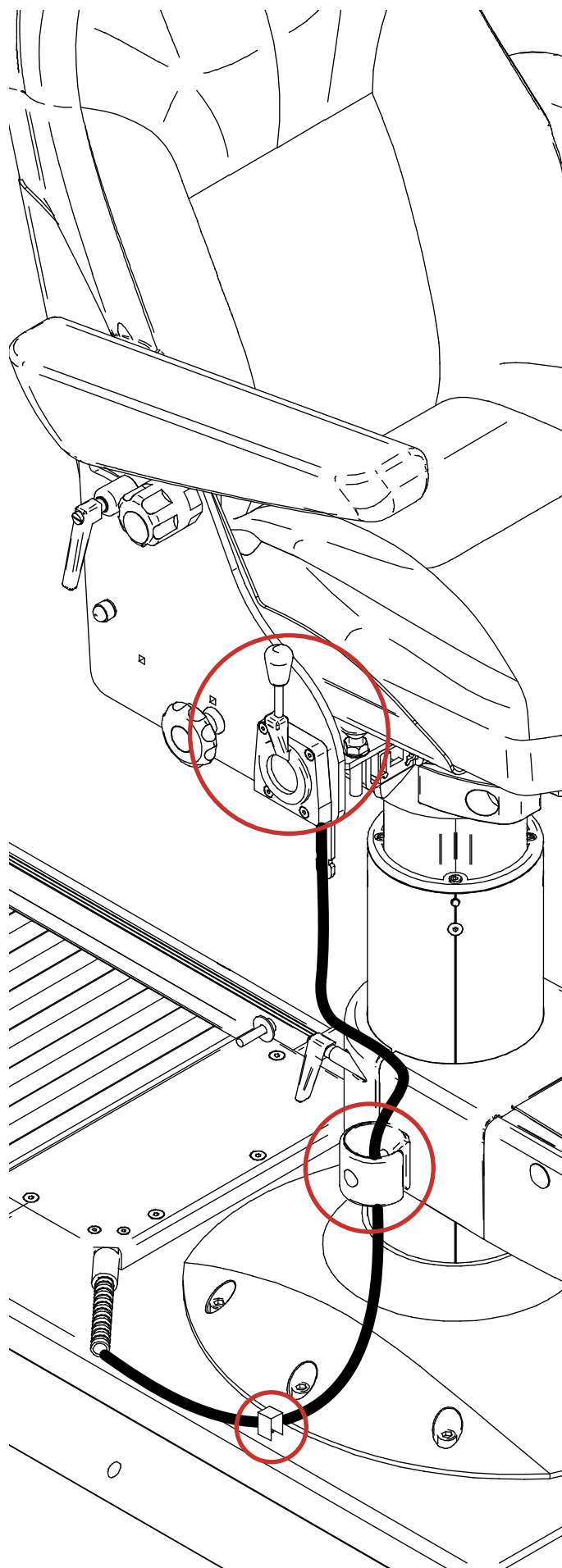
Wire with saddle and fork fitting

Pos.	Qty.	Description	Article No.:
1	1	Fork for Wire	WIRE-003
2	1	Control cable with nut	WIRE-004
3	1	Saddle for wire	WIRE-002
4	2	Nut M5	B460-M5
5	2	Star Washer M5	B484-M5

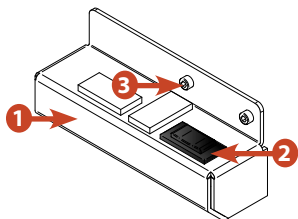


Cable holders

Pos.	Qty.	Description	Article No.:
1	1	To be mounted in the foot rest (if applicable)	



6512 - Release unit for electrical driven deck rail. Replaces the 6375 where applicable.



Electrical switch for forward/aft travel

Pos.	Qty.	Description	Article No.:
1	1	Switch box	SAP-2410
2	1	Switch	BRY-001
3	2	Unbraco M5X10	B415-M5X10
3*	2	Blind lid for the Unbraco	PLAST-012

Additional switches (up to totally three) can be equipped into the switch box. To order additional switches please state article number BRY-001 in your order.

Concealed wiring through column

The electrical wire is placed inside the chair base, and through the column and out the through a hole in the pedestal and into the electrically driven deck rail engine. If you are to mount an earlier bought NorSap chair onto the electrical deck rail, you may need to drill the hole in the pedestal. See later pages for instructions on how to cable the column / deck rail.

IMPORTANT

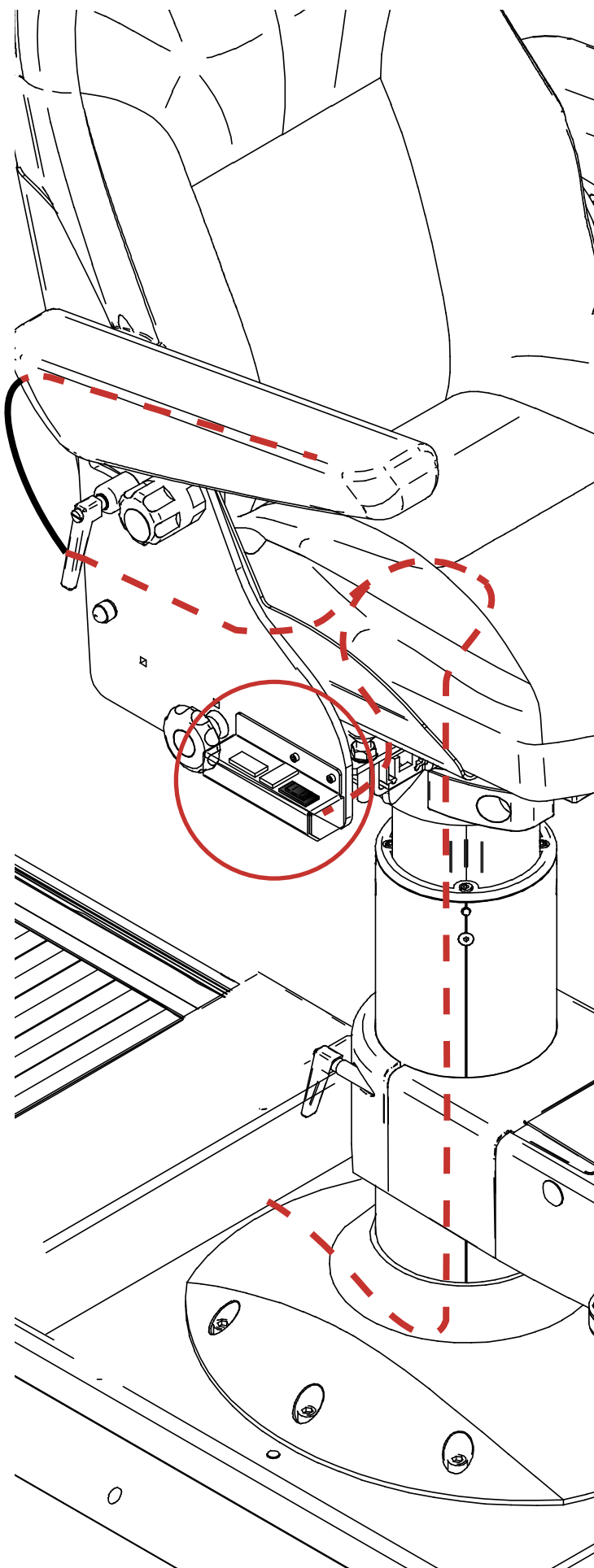
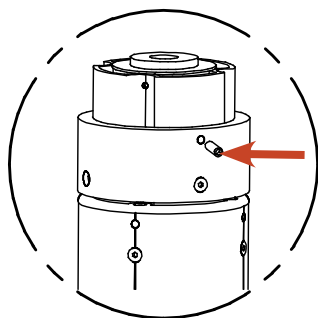
To prevent tearing of wires / cables when turning the chair > 350° a turn stop needs to be applied!

A M6X10 bolt is placed where the red arrows shows. This prohibits the chair from turning 360°. This is a security feature installed in the chairs function.

To gain access to the square top of the chair, you need to fully loosen the side hand wheels, and slide the top of. This is a simple operation, but its advised to be two persons doing the operation.

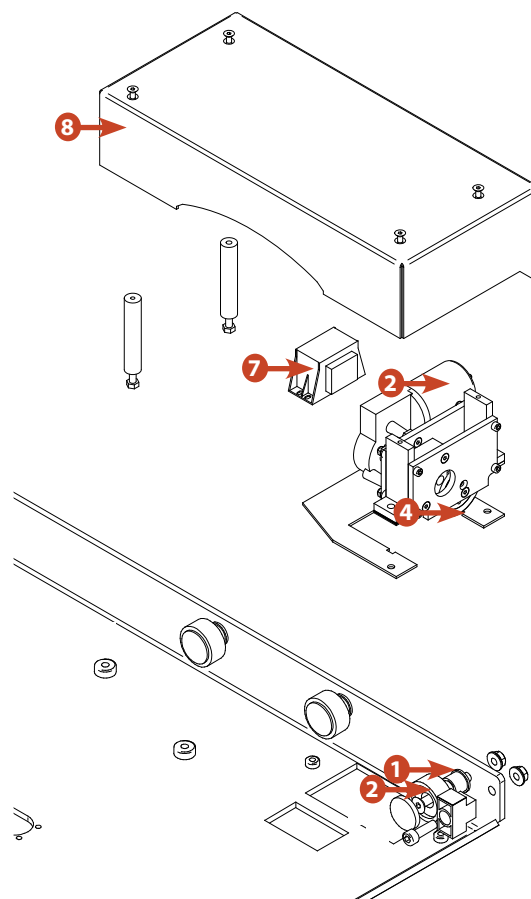


On older models you will need to insert a stopping splint in the top of the column shown on the illustration beneath. Art.No.: B424-M8X25



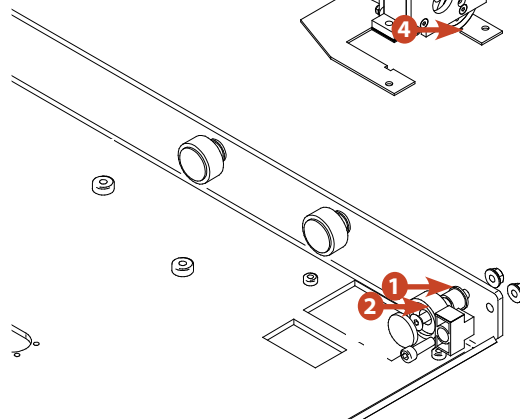
DEL-3731 Electrical Engine for Deck rail

Pos.	Ant.	Vare Navn	Vare Nr.	Rev.
1*	1	Gear Ø62X10	SAP-0579	A-1
2	1	Electric Engine	ELDEL-005	
3*	1	Gear Ø30 X10	SAP-1030	0-2
4	1	Travel wheel Ø73	DEL-124	A-1
5*	2	Ballbearing	KLA-001	
6*	1	Wheel Axel	SAP-0377	0-2
7	1	Electric controller	ELDEL-037	
8	1	Engine house	SAP-1054	0-2



DEL-067 Wagon for Electric Deck Rail

Pos.	Ant.	Vare Navn	Vare Nr.	Rev.
1	8	Axel for wheel	SAP-0007	0-6
2	8	Rubberized wheel	KLA-006	



Maintenance

Note - We do not stand liable if alterations are made by cutting or disassembling the deck rails beyond that described here; Any such work will be done at your own risk. Do not apply grease in the wheel tracks. Grease will attract dust and other contaminants.

The deck rail assembly must be mounted on a flat and even surface. If it is not, the two rails may not be perfectly parallel with each other and the chair may not slide smoothly or it may become jammed and may not slide at all.

If the original deck surface is uneven, warped or otherwise distorted, something must be done to provide an even, flat surface on which to mount the deck rail assembly. We strongly recommend mounting a firm, flat and even surface onto the deck and mounting the deck rail assembly to this new surface. This "built up" surface should be the same length and width as the deck rail assembly so that it does not create a tripping hazard.

Mount Deck Rail to floor first. The Skirting Boards (outer casing) to be mounted after the gutters for the Carriage Wagon Wheels have been cleaned and free of particles that may accumulate here from ongoing work onboard.

Do not place grease inside the wheel tracks, this will attract undesirable particles and obstruct the wheels.